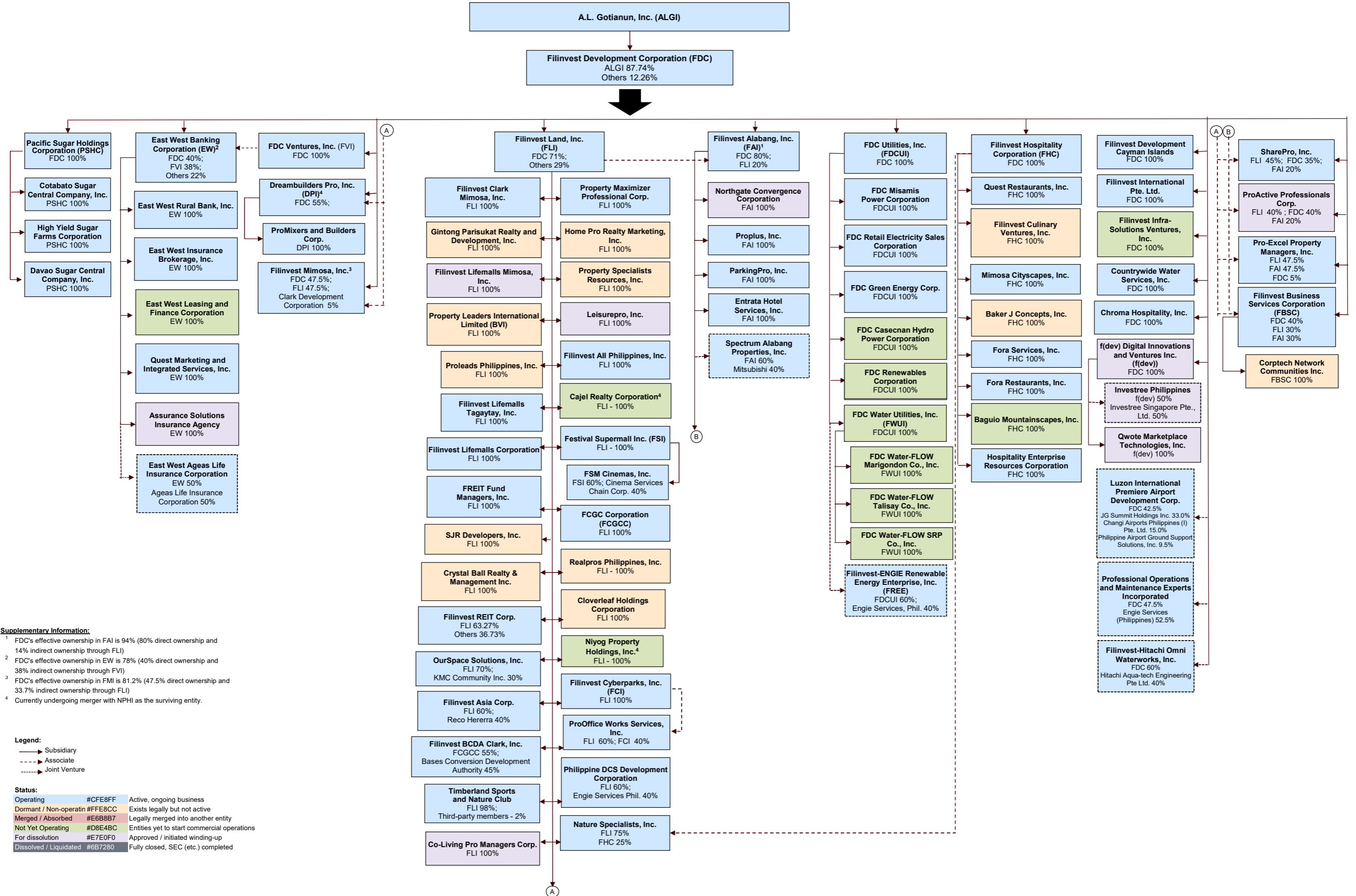


A.L. GOTIANUN, INC.
MAP SHOWING THE RELATIONSHIP BETWEEN AND AMONG THE COMPANIES IN THE GROUP, ITS ULTIMATE PARENT, CO-SUBSIDIARIES, JOINT VENTURES AND ASSOCIATES
(As of May 31, 2026)



Supplementary Information:

¹ FDC's effective ownership in FAI is 94% (80% direct ownership and 14% indirect ownership through FLI)

² FDC's effective ownership in EW is 78% (40% direct ownership and 38% indirect ownership through FVI)

³ FDC's effective ownership in FMI is 81.2% (47.5% direct ownership and 33.7% indirect ownership through FLI)

⁴ Currently undergoing merger with NPHI as the surviving entity.

Legend:

- Subsidiary
- - - Associate
- ⋯ Joint Venture

Status:

Operating	#CFE8FF	Active, ongoing business
Dormant / Non-operatin	#FFE8CC	Exists legally but not active
Merged / Absorbed	#E6B8B7	Legally merged into another entity
Not Yet Operating	#D8E4BC	Entities yet to start commercial operations
For dissolution	#E7E0F0	Approved / initiated winding-up
Dissolved / Liquidated	#6B7260	Fully closed, SEC (etc.) completed